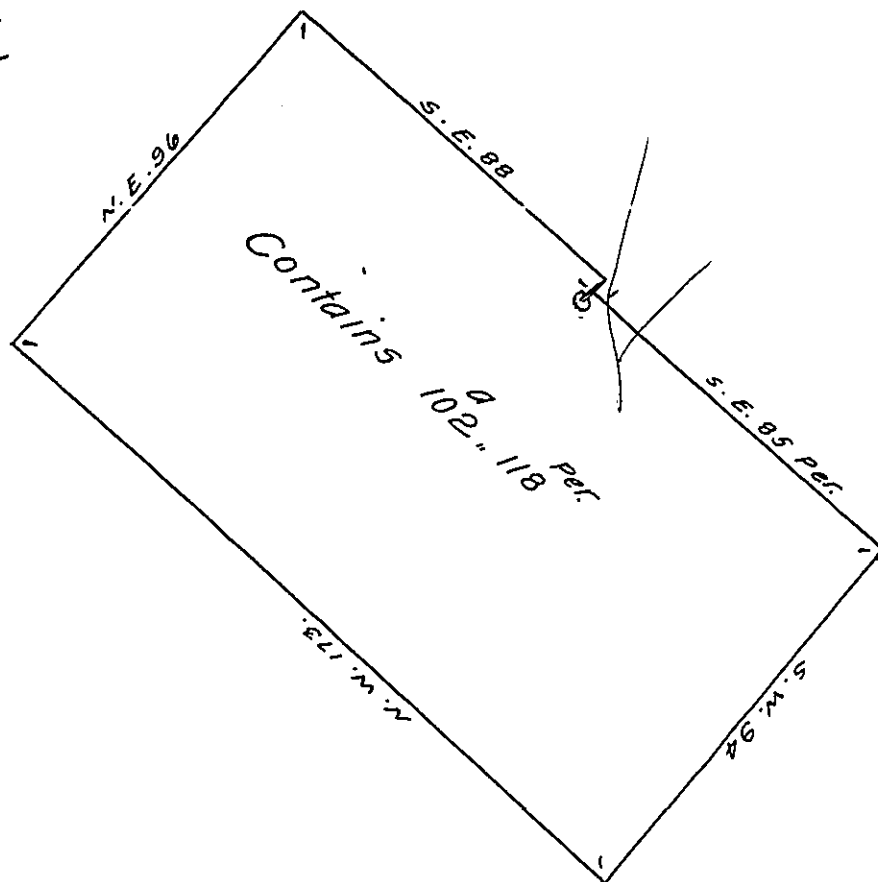


$\frac{177}{96}$
 $\frac{157}{98}$
 $\frac{152}{98}$
 $\frac{162}{98}$
 $\frac{172}{98}$
 $\frac{177}{98}$



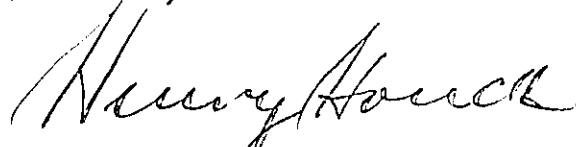
By Virtue of a Warrant from the Commissioners of Property dated the tenth day of September in the Year 1717 for Surveying to David Powel of Philadelphia three thousand acres of Land in this Province. There was ^{in 10th of 1717} Survey'd for Andrew Ledrah a Tract of land in part of The said three thousand acres containing one hundred acres (with a little overplus) situate near Shippack in the County of Philadelphia. Beginning at a ^{near} White Oak ~~at~~ a Corner of Hans Riff's Land and running by the same South West two perches to the said Corner. Then South East by the said Riff's land Eighty five perches. Then by Vacant Land South West Ninety four perches. Then North West one hundred seventy three perches. Then North East Ninety six perches. Then South East eighty eight perches to the place of Beginning

Certified at Philadelphia by

Jacob Taylor

Returned into the Secretary's Office the 6th day of August 1734.

IN TESTIMONY that the above is a copy of the original remaining on file in the Department of Internal Affairs of Pennsylvania, made conformably to an Act of Assembly approved the 16th day of February, 1833, I have hereunto set my Hand and caused the Seal of said Department to be affixed at Harrisburg, this twenty first day of April 1910.


 Secretary of Internal Affairs.